

Supplementary Material

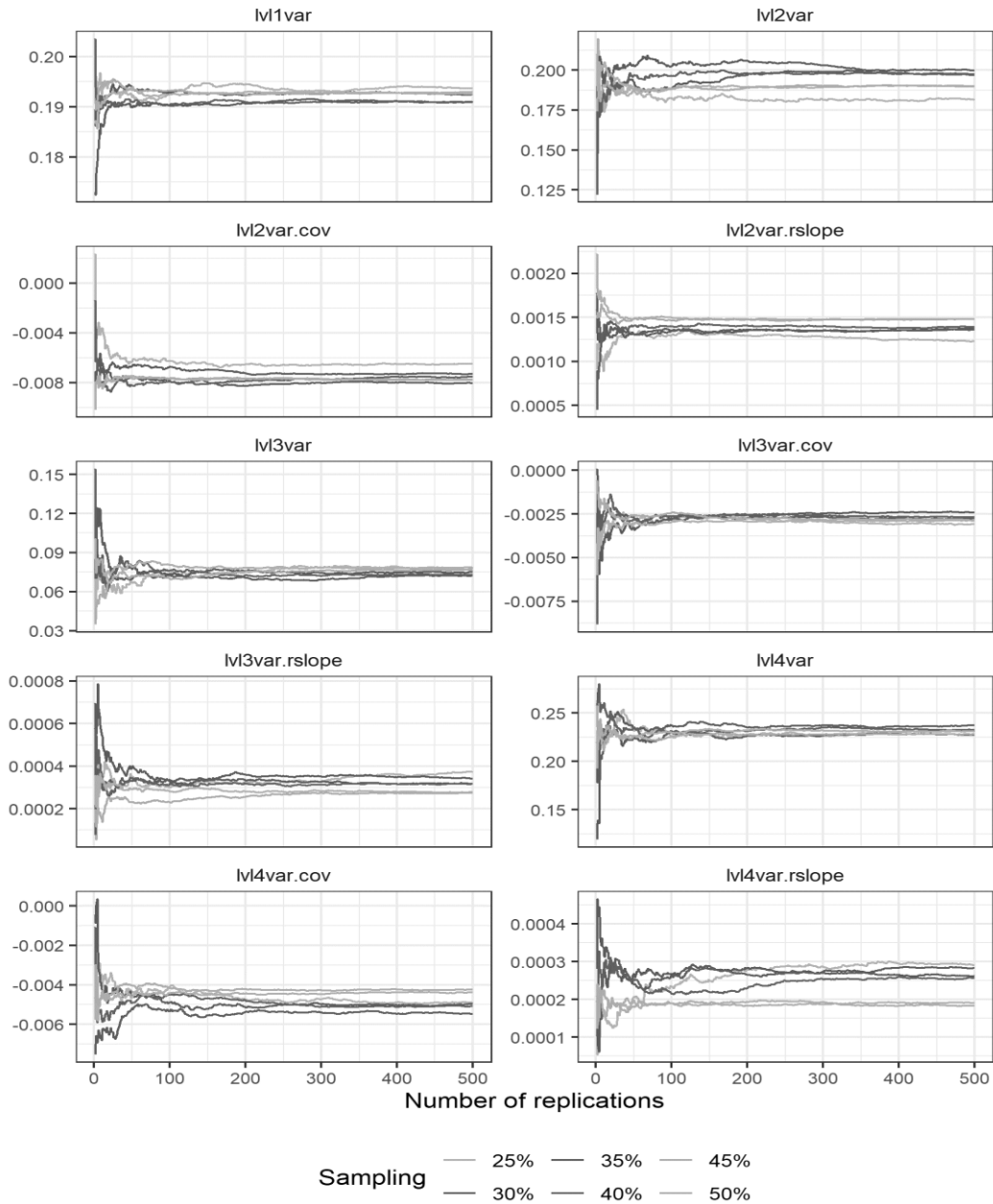


Figure A1: Cumulative mean of variance estimates using different stratified sampling percentages.

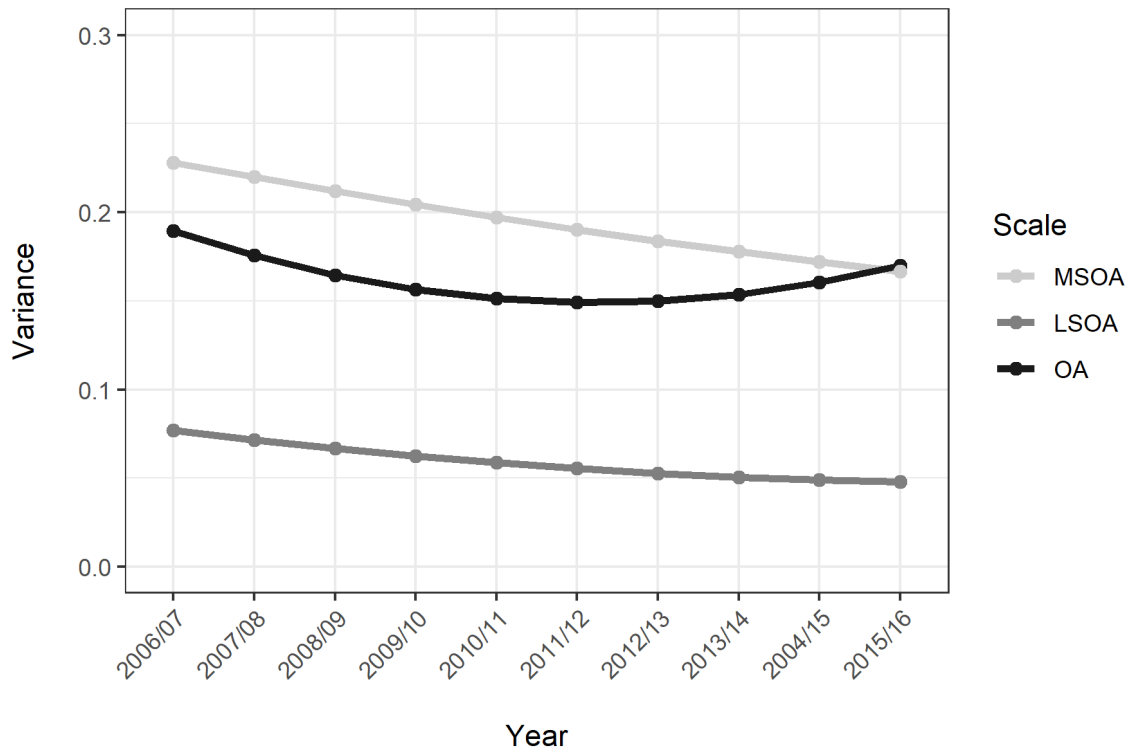


Figure A2. Variance functions for each spatial scale using 50% samples.

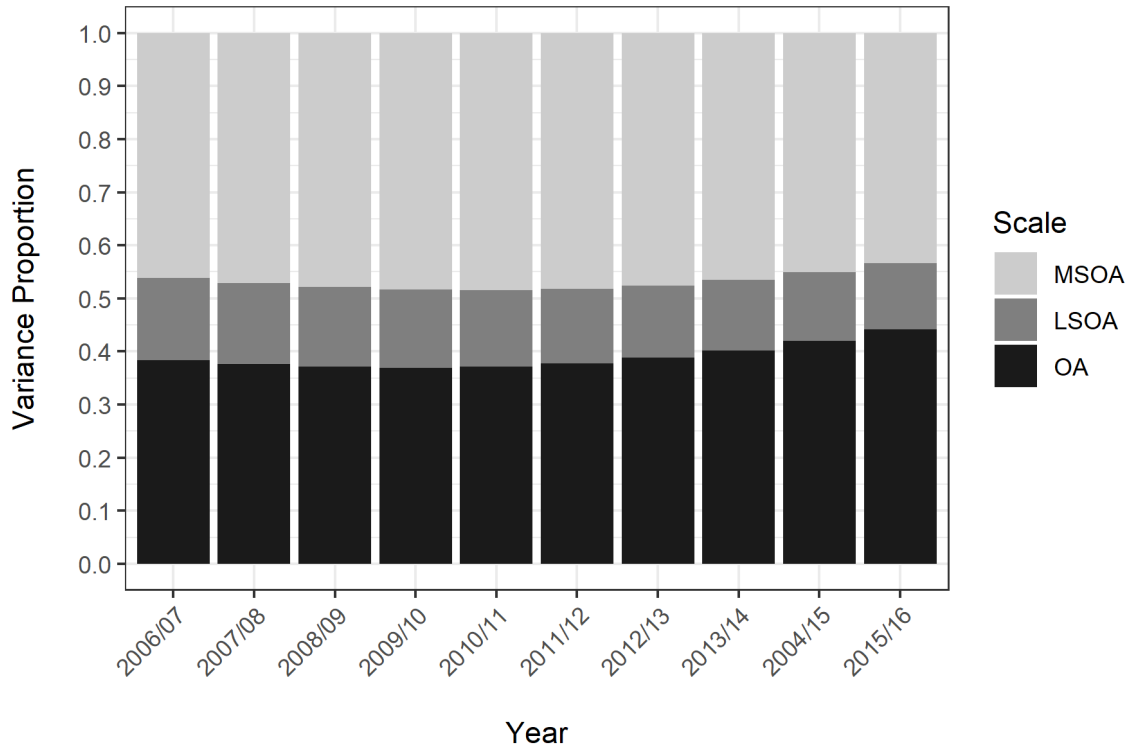


Figure A3. Proportion of total variance attributable to each spatial scale using 50% samples.

Table A1. Spearman's rank correlation (Output Area level) for known offender counts
($p < 0.05$).

Year	2006/07	2007/08	2008/09	2009/10	2010/11	2011/12	2012/13	2013/14	2014/15	2015/16
2006/07	1	0.75	0.73	0.69	0.67	0.65	0.63	0.61	0.57	0.67
2007/08	0.75	1	0.75	0.69	0.69	0.67	0.66	0.64	0.59	0.62
2008/09	0.73	0.75	1	0.72	0.69	0.66	0.64	0.62	0.58	0.61
2009/10	0.69	0.69	0.72	1	0.7	0.66	0.65	0.61	0.58	0.6
2010/11	0.67	0.69	0.69	0.7	1	0.71	0.67	0.63	0.62	0.57
2011/12	0.65	0.67	0.66	0.66	0.71	1	0.75	0.71	0.68	0.55
2012/13	0.63	0.66	0.64	0.65	0.67	0.75	1	0.75	0.7	0.54
2013/14	0.61	0.64	0.62	0.61	0.63	0.71	0.75	1	0.75	0.5
2014/15	0.57	0.59	0.58	0.58	0.62	0.68	0.7	0.75	1	0.47
2015/16	0.67	0.62	0.61	0.6	0.57	0.55	0.54	0.5	0.47	1